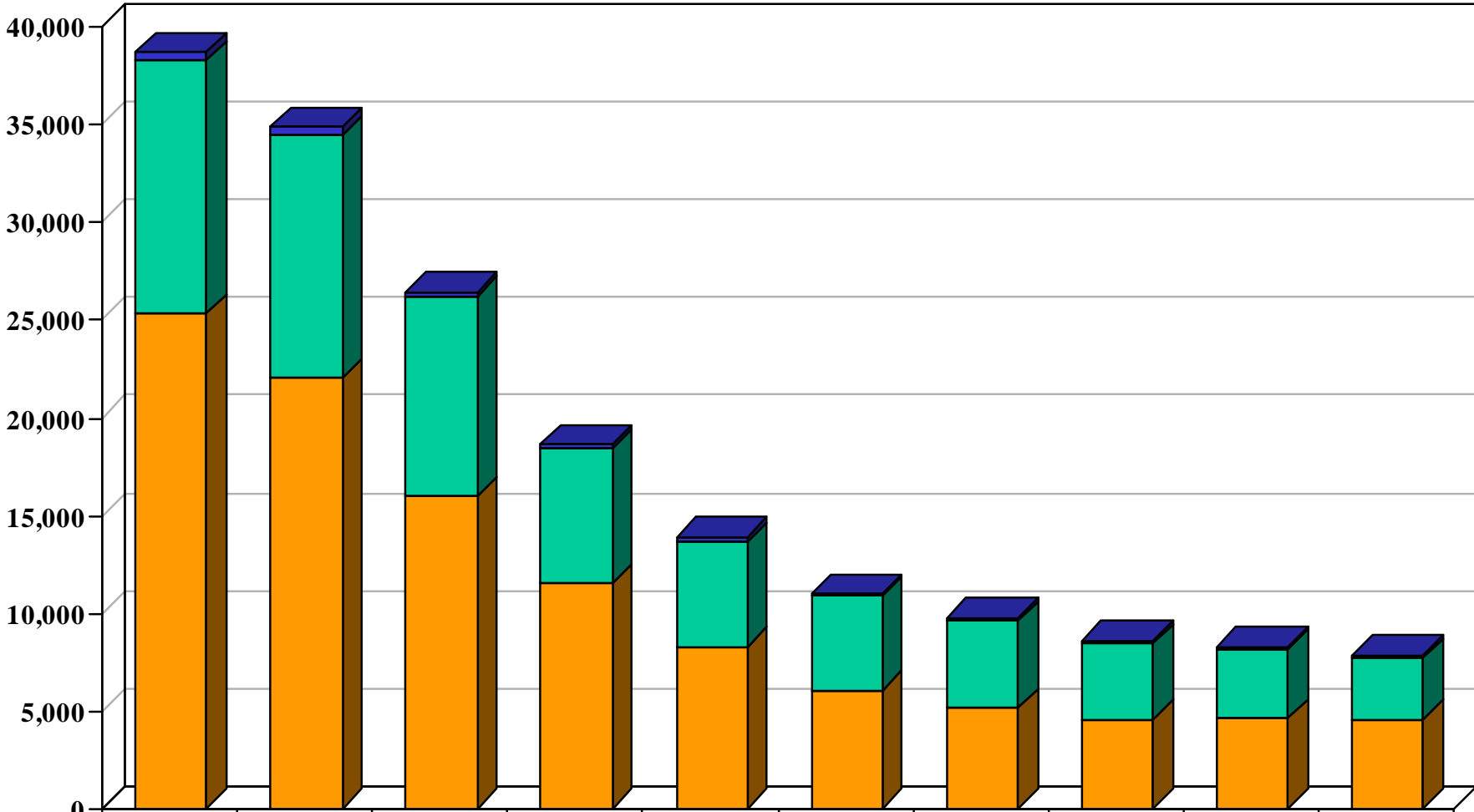


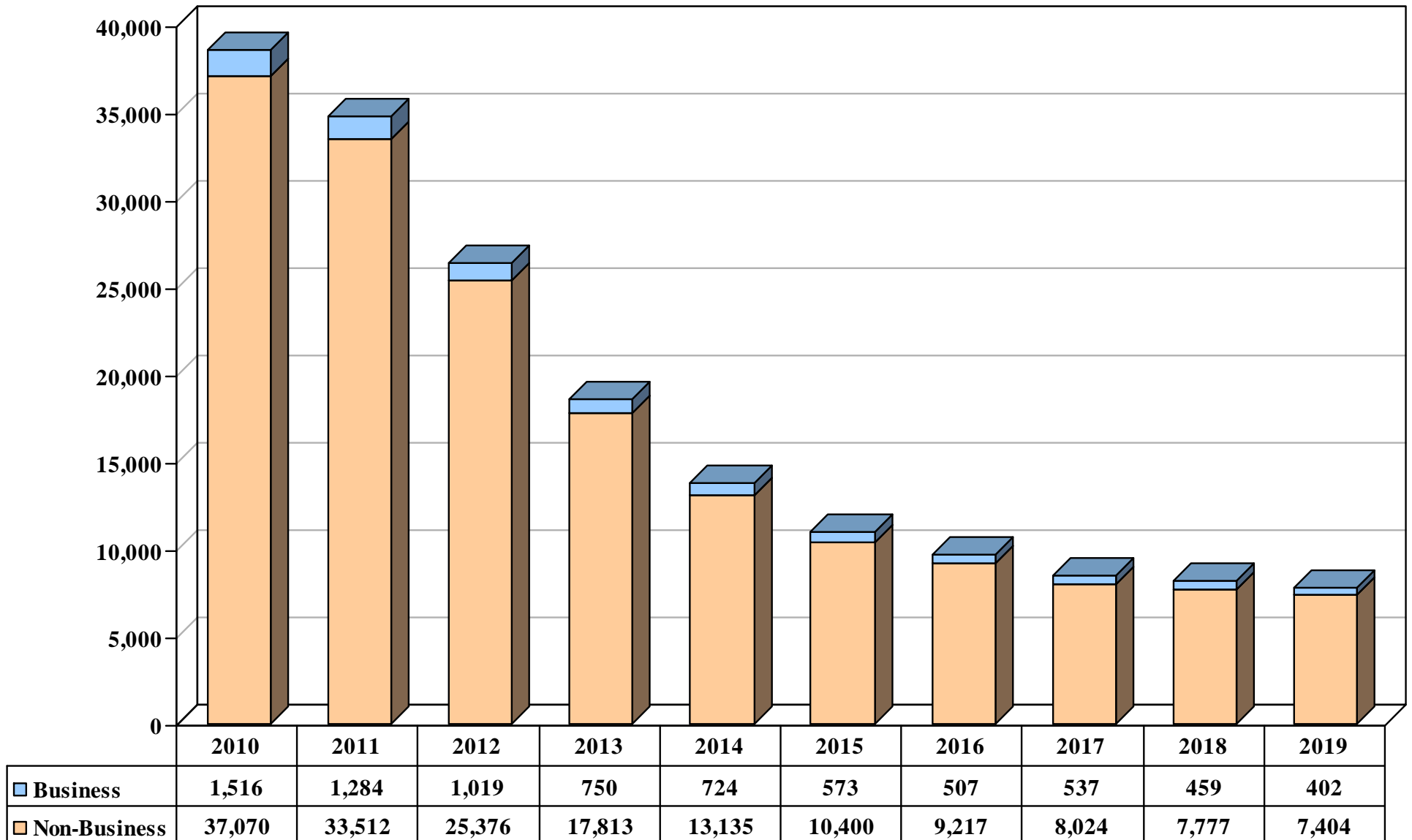
# Northern District of California - Bankruptcy Case Filings by Chapter Ten Year Period 2010 – 2019



	2010	2011	2012	2013	2014	2015	2016	2017	2018	2019
■ Chapter 11	438	396	252	188	227	160	138	130	106	124
■ Chapter 13	12,874	12,437	10,190	6,868	5,381	4,812	4,449	3,866	3,524	3,151
■ Chapter 7	25,263	21,941	15,933	11,494	8,239	5,999	5,135	4,560	4,603	4,527

Filings only excluding reopenings

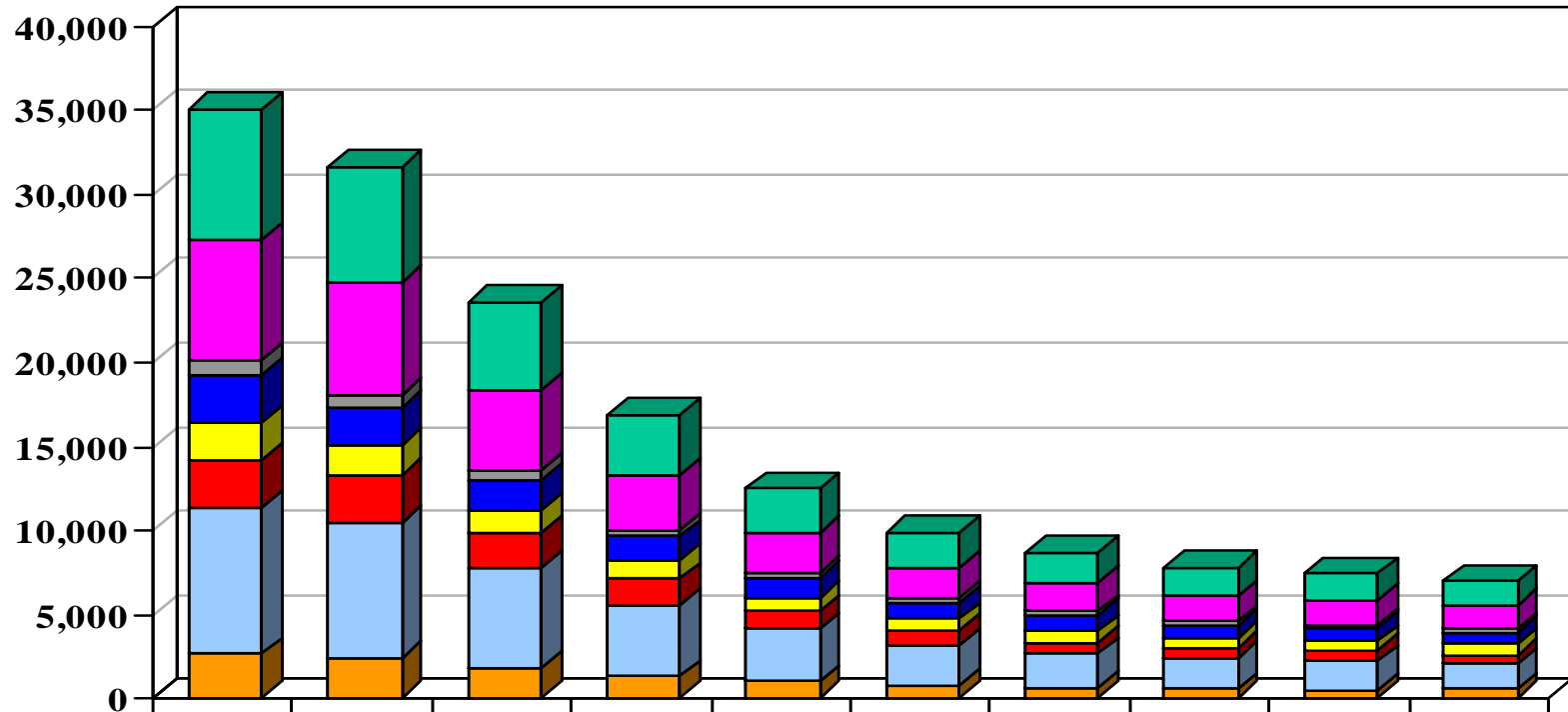
# Northern District of California - Bankruptcy Case Filings by Type Ten Year Period 2010 - 2019



Filings only excluding reopenings and transfers

# Northern District of California - Bankruptcy Case Filings by County\*

## Ten Year Period 2010 - 2019

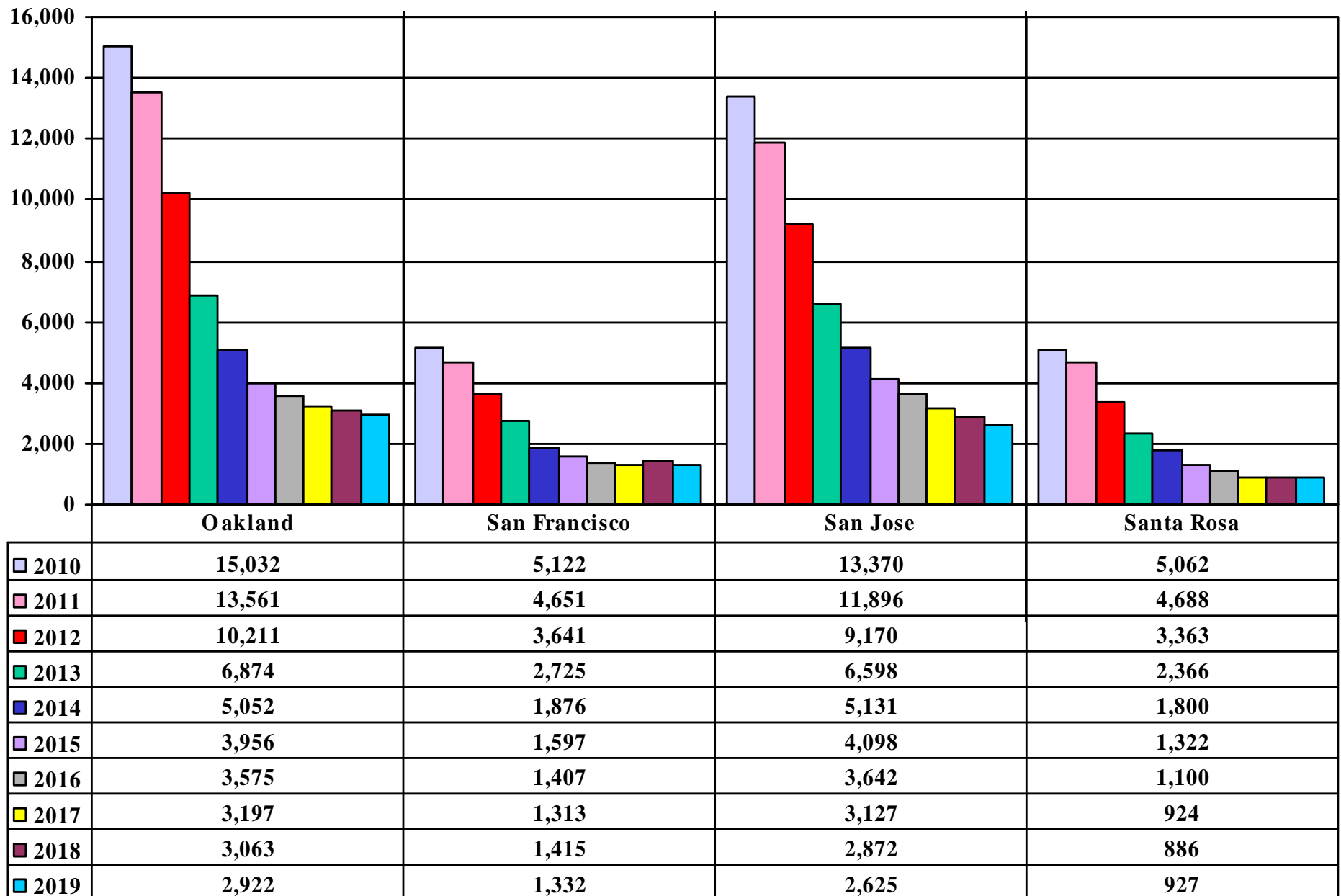


	2010	2011	2012	2013	2014	2015	2016	2017	2018	2019
Alameda	7,747	6,841	5,224	3,613	2,603	2,043	1,824	1,683	1,509	1,437
Contra Costa	7,152	6,646	4,738	3,232	2,374	1,815	1,687	1,482	1,512	1,422
Marin	831	756	585	389	301	215	215	203	179	167
Monterey	2,829	2,258	1,846	1,457	1,261	1,024	963	831	782	730
San Francisco	2,191	1,823	1,347	1,067	762	706	666	588	588	600
San Mateo	2,919	2,797	2,051	1,519	1,036	843	664	587	638	551
Santa Clara	8,677	8,012	5,963	4,275	3,149	2,429	2,040	1,817	1,642	1,487
Sonoma	2,579	2,388	1,764	1,266	946	694	560	524	491	535

Filings only (excluding reopenings and transfers)

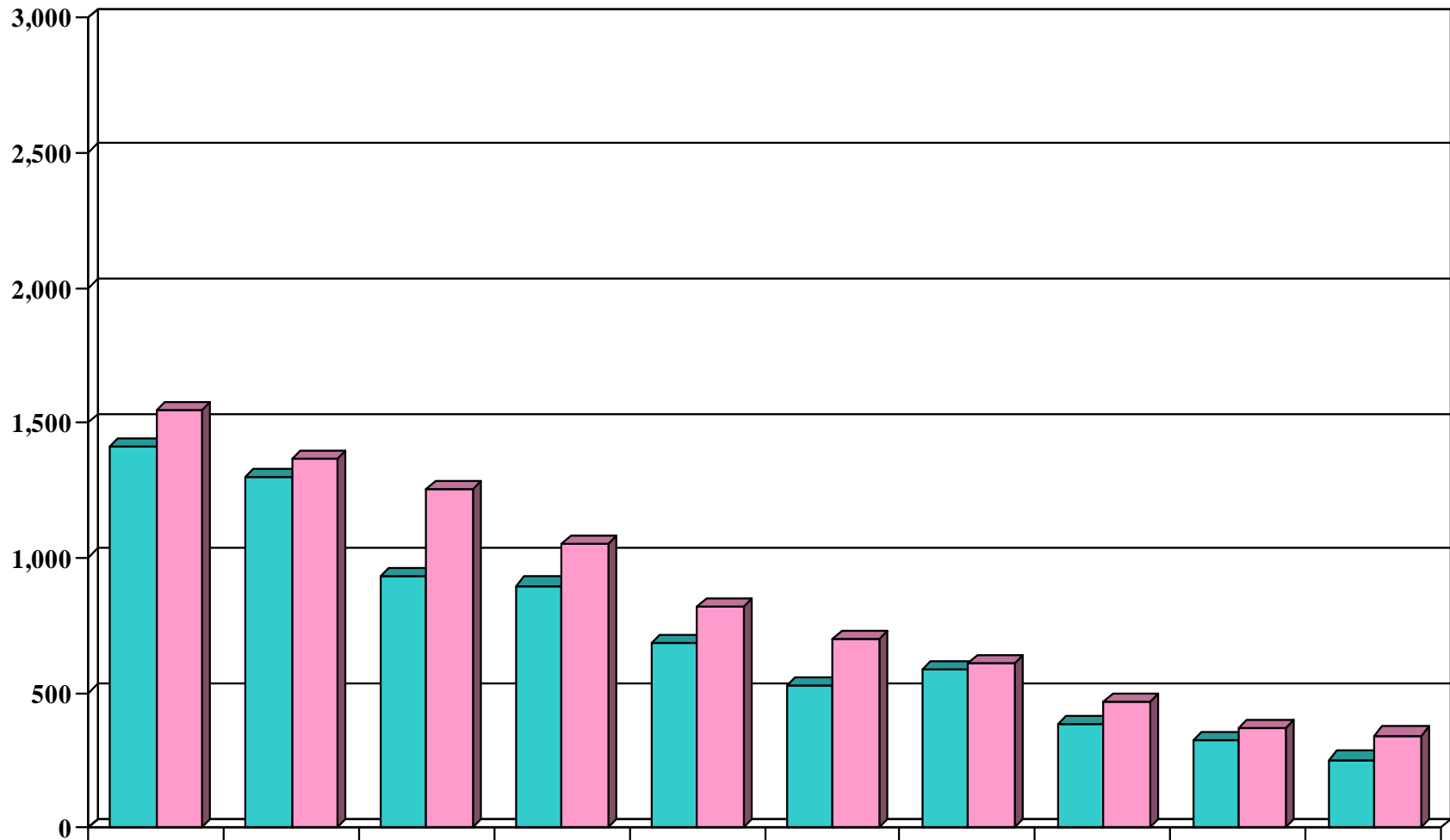
\* Only major Northern California counties are represented in this chart.

# Northern District of California - Bankruptcy Case Filings by Division Ten Year Period 2010 - 2019



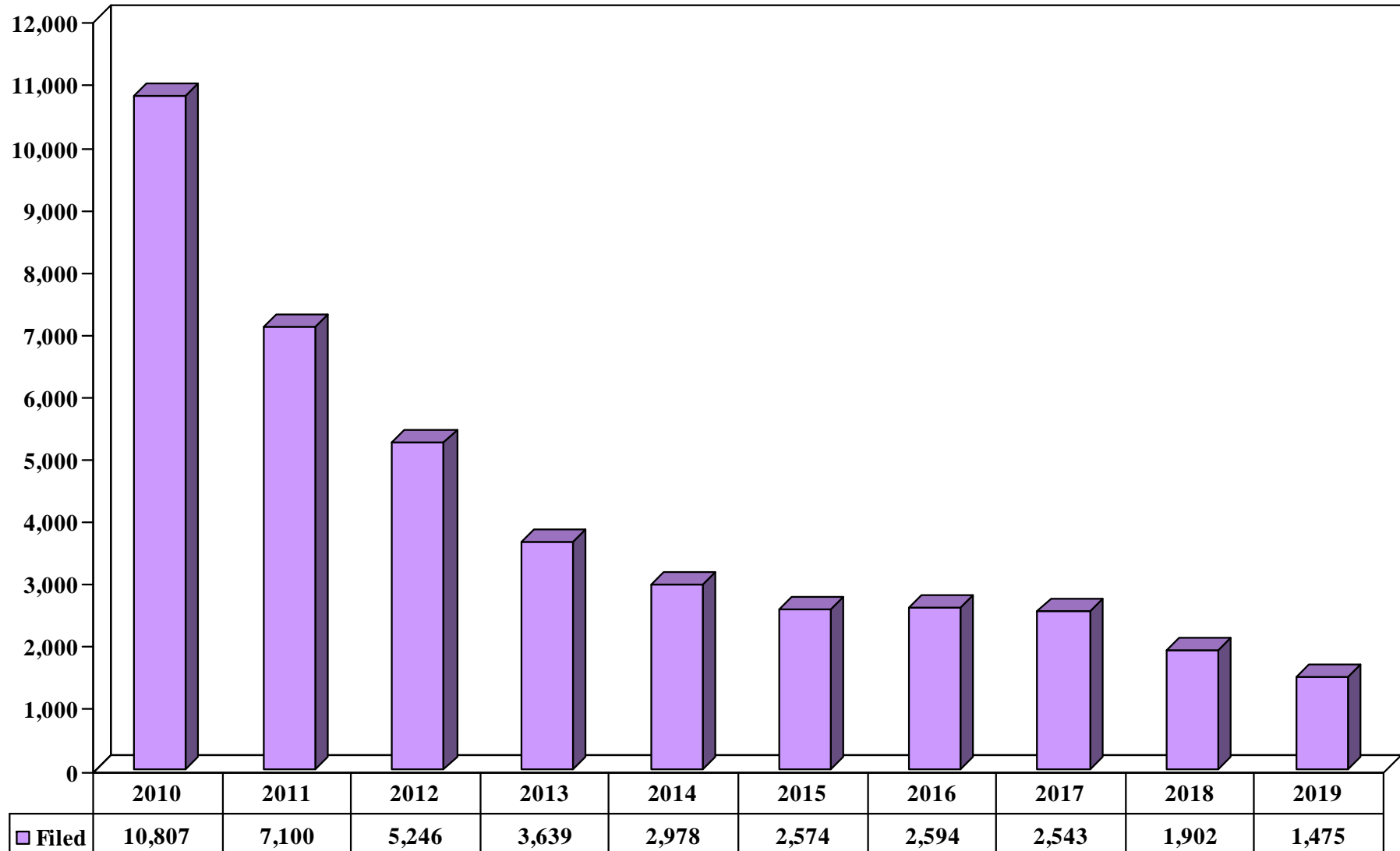
Filings only (excluding reopenings and transfers)

## Northern District of California - Adversary Proceedings Ten Year Period 2010 - 2019

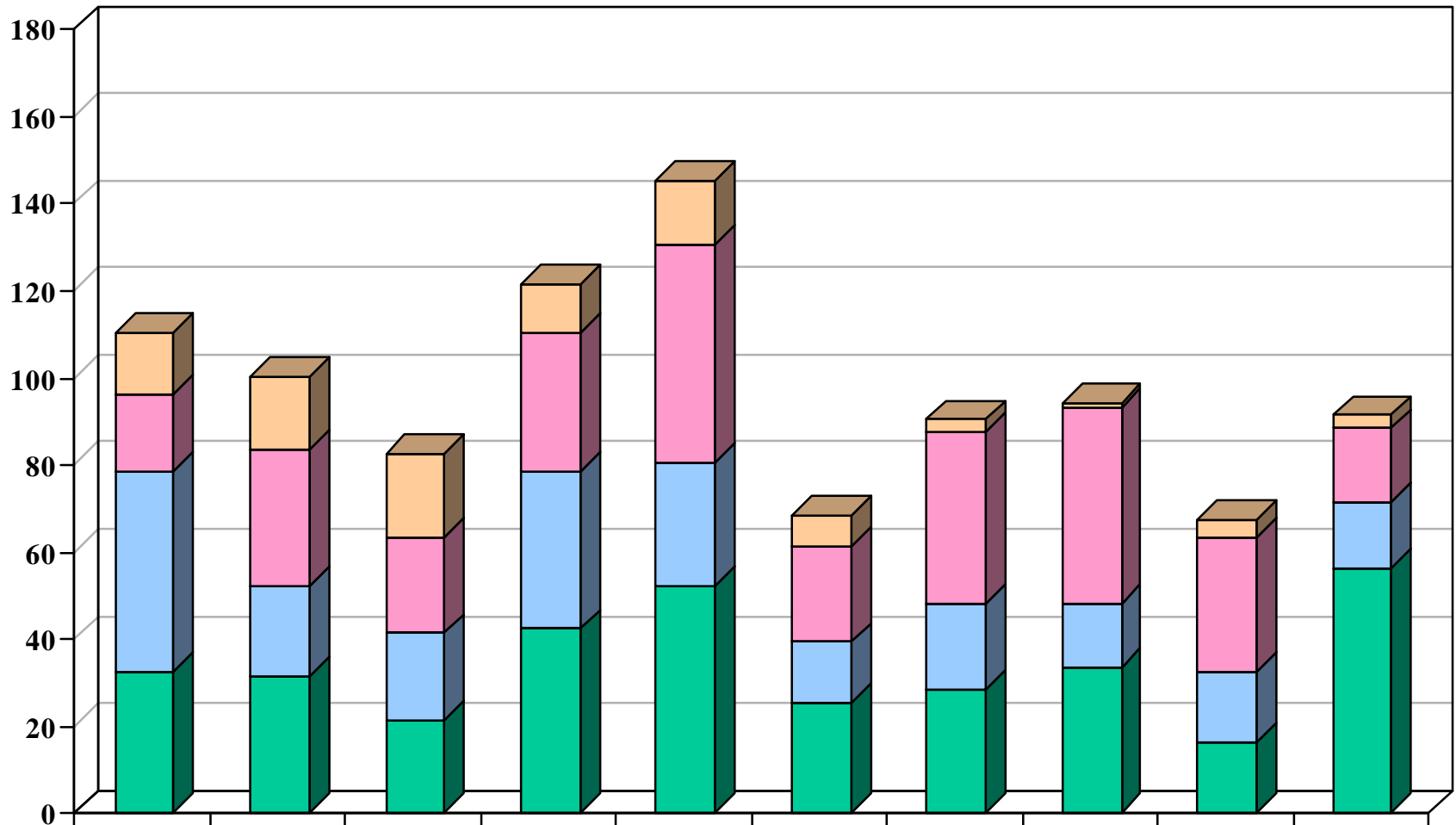


	2010	2011	2012	2013	2014	2015	2016	2017	2018	2019
<span style="color: teal;">■</span> Filed	1,407	1,295	932	896	682	522	586	385	321	251
<span style="color: pink;">■</span> Terminated	1,542	1,365	1,252	1,047	819	698	605	463	370	341

## Northern District of California - Motion for Relief from Stay Ten Year Period 2010 - 2019



## Northern District of California - Appeals Filed by Division Ten Year Period 2010 - 2019



	2010	2011	2012	2013	2014	2015	2016	2017	2018	2019
<span style="color: #f4a460;">■</span> Santa Rosa	14	17	19	11	15	7	3	1	4	3
<span style="color: #f080f0;">■</span> San Jose	18	31	22	32	50	22	39	45	31	17
<span style="color: #add8e6;">■</span> Oakland	46	21	20	36	28	14	20	15	16	15
<span style="color: #00b050;">■</span> San Francisco	32	31	21	42	52	25	28	33	16	56