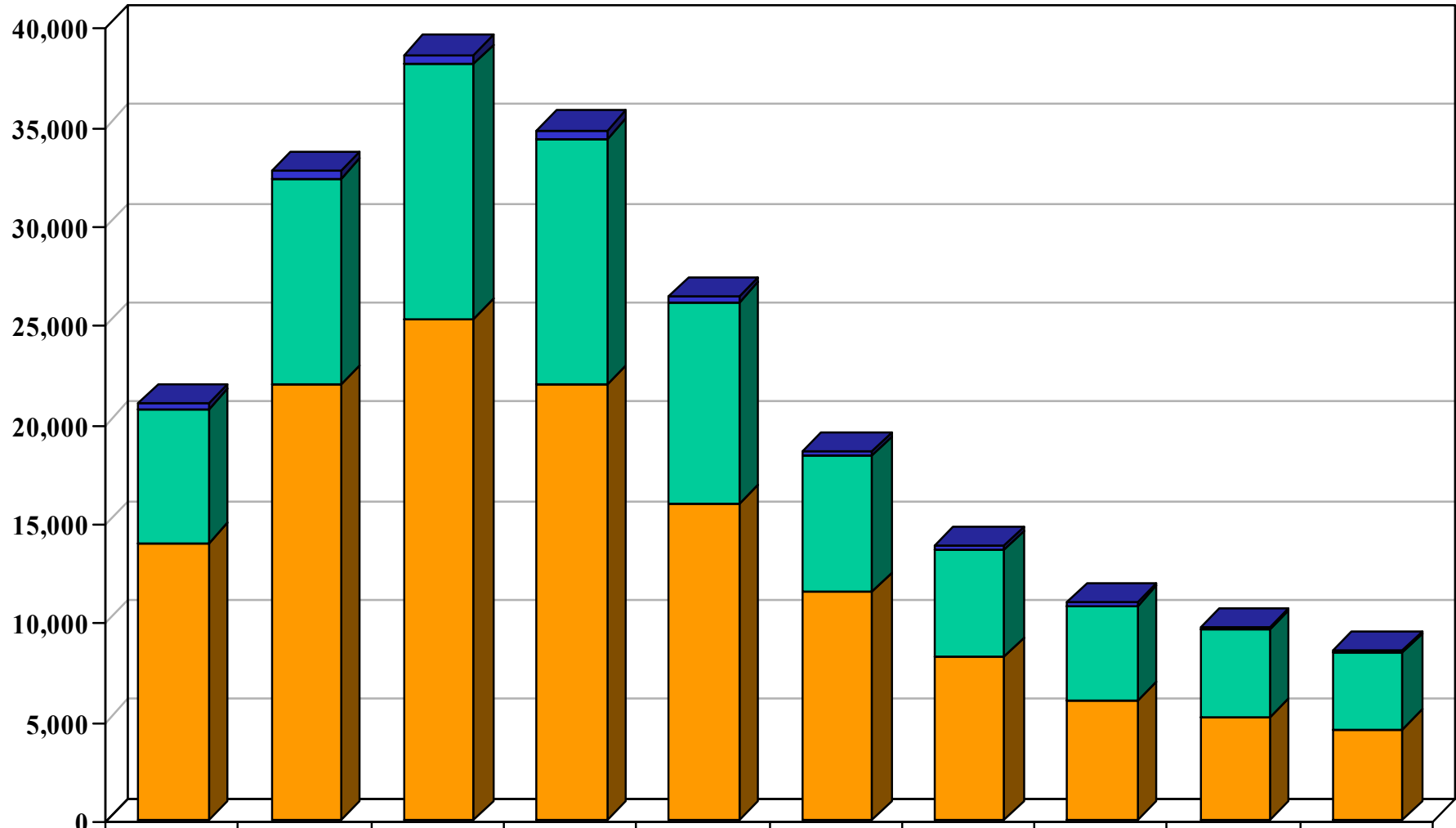


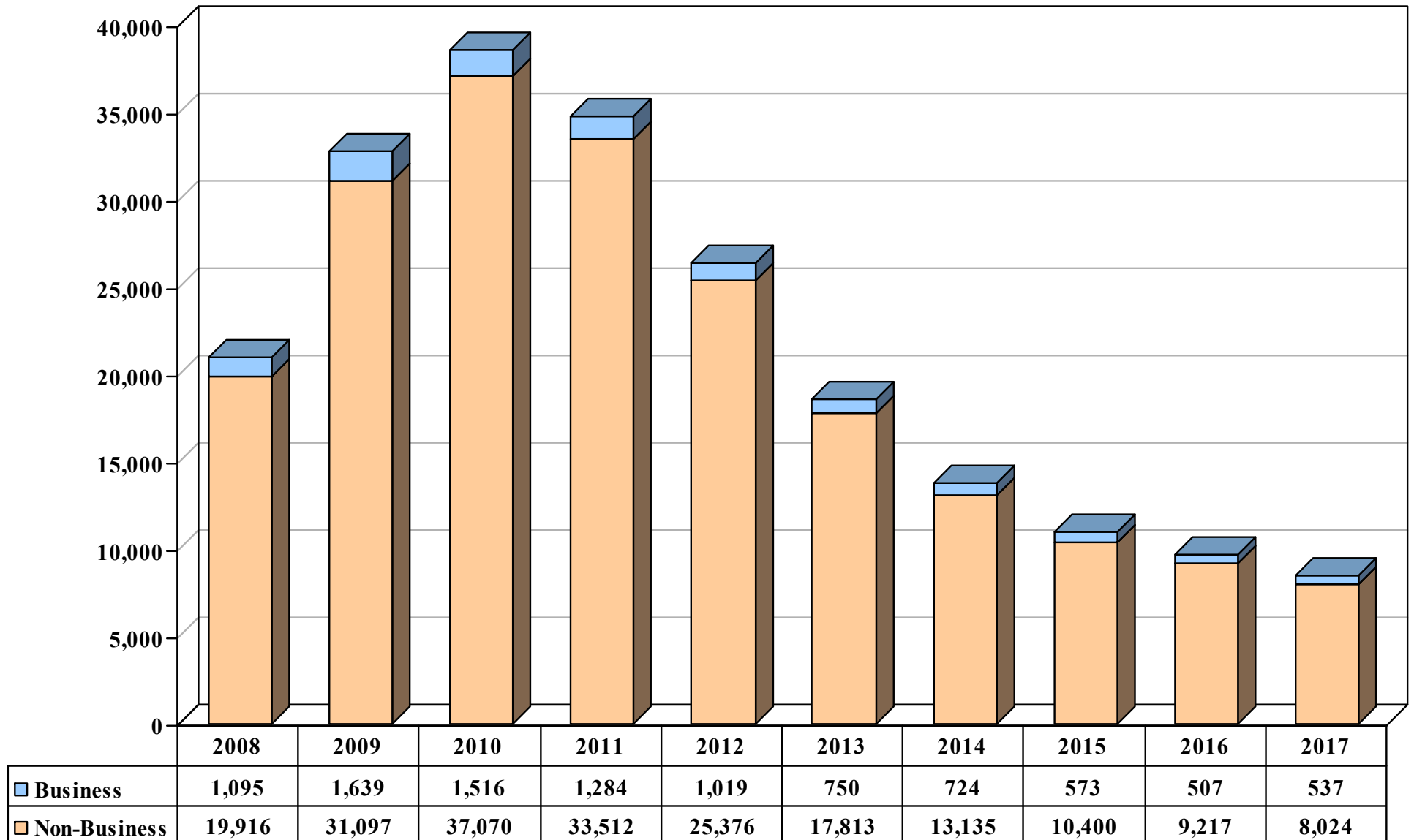
Northern District of California - Bankruptcy Case Filings by Chapter Ten Year Period 2008 – 2017



■ Chapter 11	249	381	438	396	252	188	227	160	138	130
■ Chapter 13	6,770	10,369	12,874	12,437	10,190	6,868	5,381	4,812	4,449	3,866
■ Chapter 7	13,989	21,982	25,263	21,941	15,933	11,494	8,239	5,999	5,135	4,560

Filings only excluding reopenings

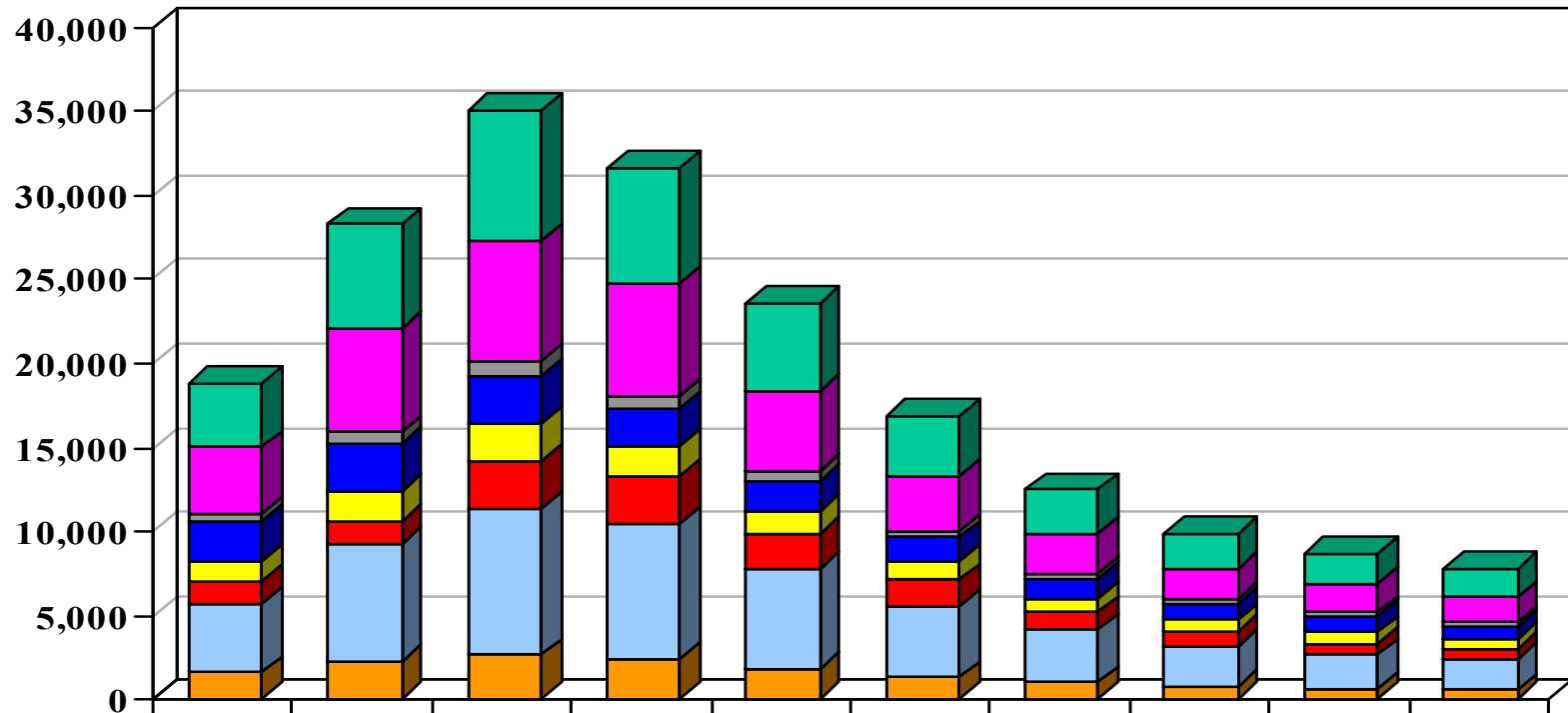
Northern District of California - Bankruptcy Case Filings by Type Ten Year Period 2008 - 2017



Filings only excluding reopenings and transfers

Northern District of California - Bankruptcy Case Filings by County*

Ten Year Period 2008 - 2017

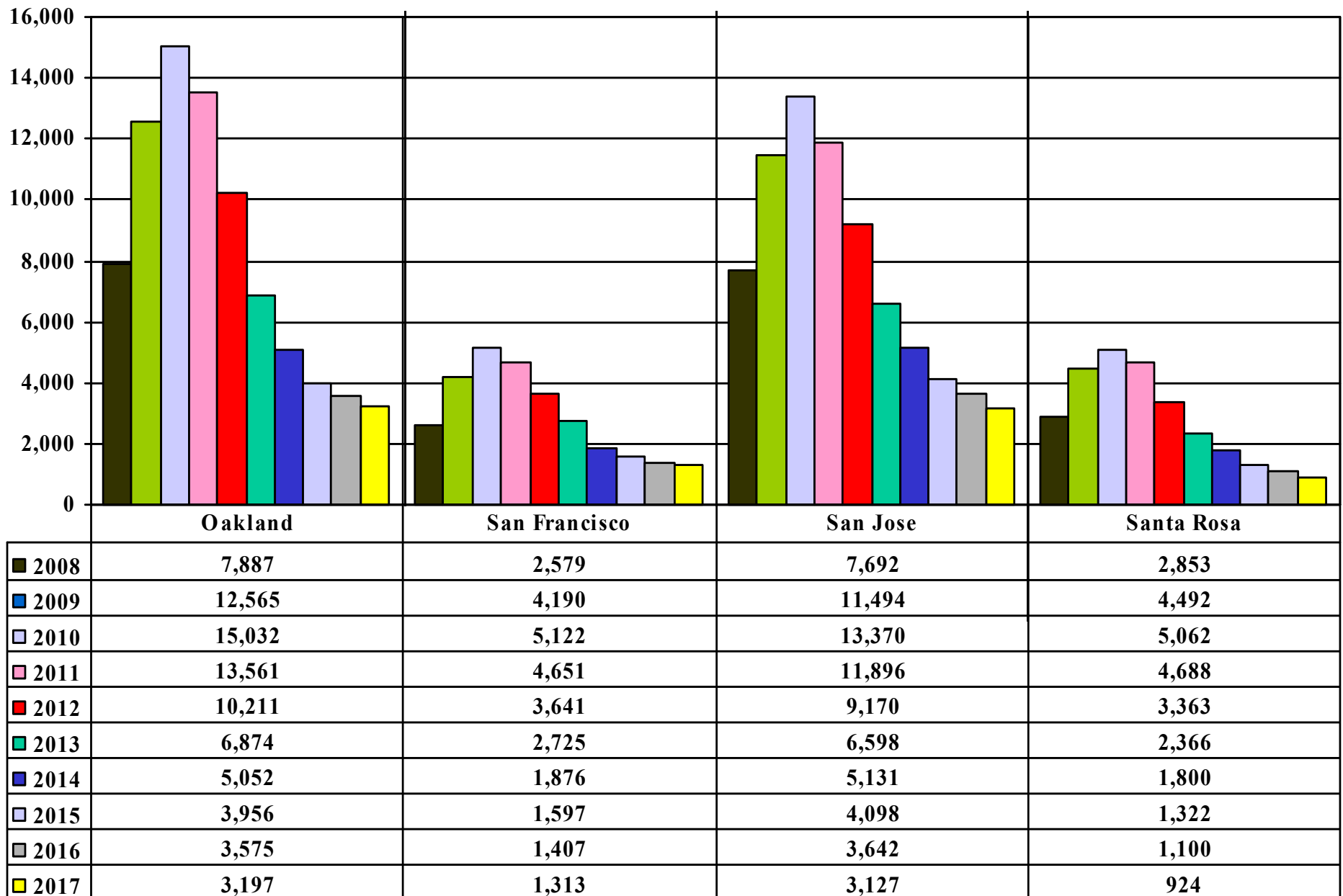


	2008	2009	2010	2011	2012	2013	2014	2015	2016	2017
Alameda	3,854	6,180	7,747	6,841	5,224	3,613	2,603	2,043	1,824	1,683
Contra Costa	3,968	6,157	7,152	6,646	4,738	3,232	2,374	1,815	1,687	1,482
Marin	382	702	831	756	585	389	301	215	215	203
Monterey	2,421	2,762	2,829	2,258	1,846	1,457	1,261	1,024	963	831
San Francisco	1,184	1,813	2,191	1,823	1,347	1,067	762	706	666	588
San Mateo	1,352	1,355	2,919	2,797	2,051	1,519	1,036	843	664	587
Santa Clara	4,064	6,953	8,677	8,012	5,963	4,275	3,149	2,429	2,040	1,817
Sonoma	1,554	2,268	2,579	2,388	1,764	1,266	946	694	560	524

Filings only (excluding reopenings and transfers)

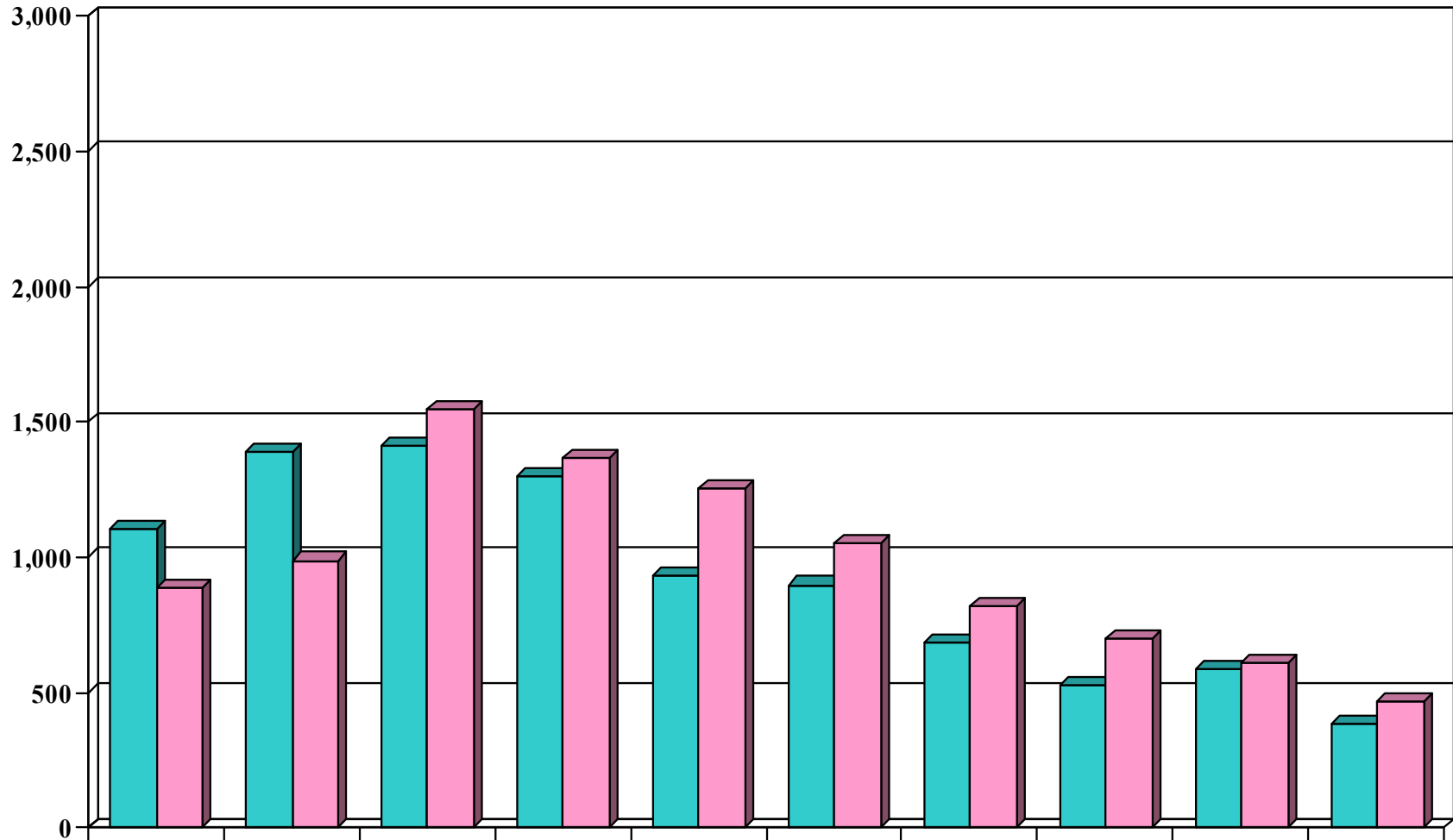
* Only major Northern California counties are represented in this chart.

Northern District of California - Bankruptcy Case Filings by Division Ten Year Period 2008 - 2017



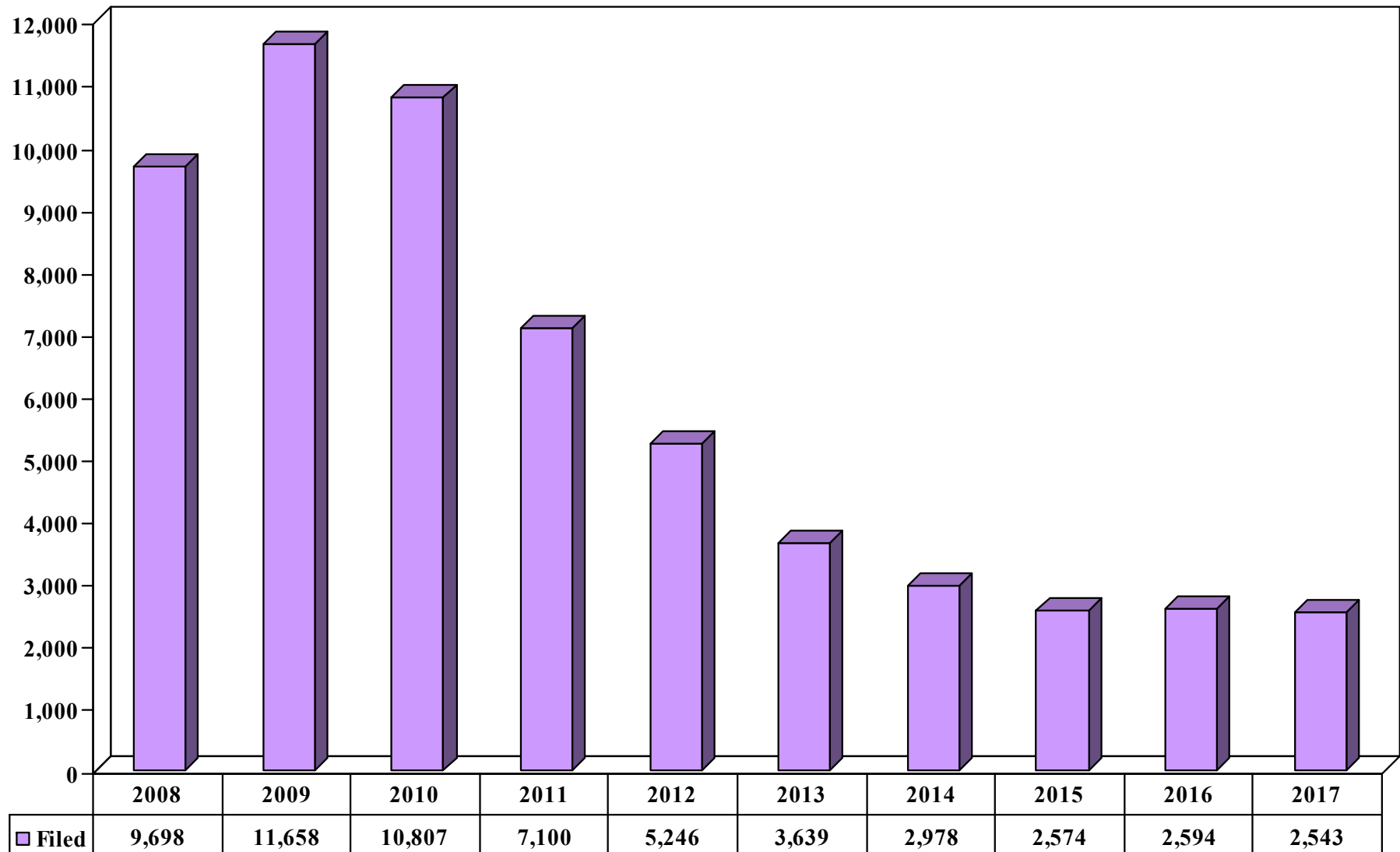
Filings only (excluding reopenings and transfers)

Northern District of California - Adversary Proceedings Ten Year Period 2008 - 2017

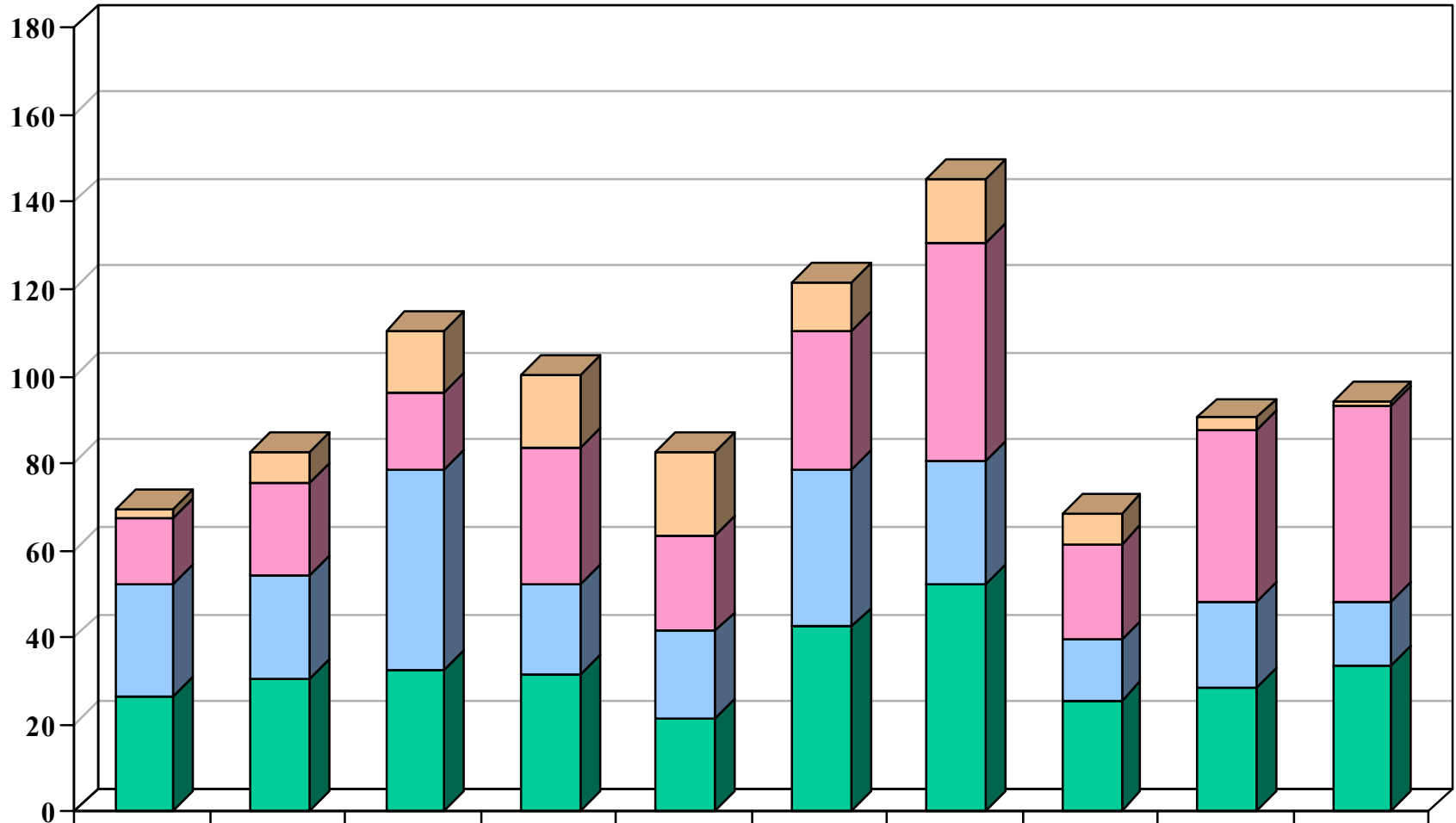


	2008	2009	2010	2011	2012	2013	2014	2015	2016	2017
■ Filed	1,101	1,389	1,407	1,295	932	896	682	522	586	385
■ Terminated	887	986	1,542	1,365	1,252	1,047	819	698	605	463

Northern District of California - Motion for Relief from Stay Ten Year Period 2008 - 2017



Northern District of California - Appeals Filed by Division Ten Year Period 2008 - 2017



	2008	2009	2010	2011	2012	2013	2014	2015	2016	2017
■ Santa Rosa	2	7	14	17	19	11	15	7	3	1
■ San Jose	15	21	18	31	22	32	50	22	39	45
■ Oakland	26	24	46	21	20	36	28	14	20	15
■ San Francisco	26	30	32	31	21	42	52	25	28	33