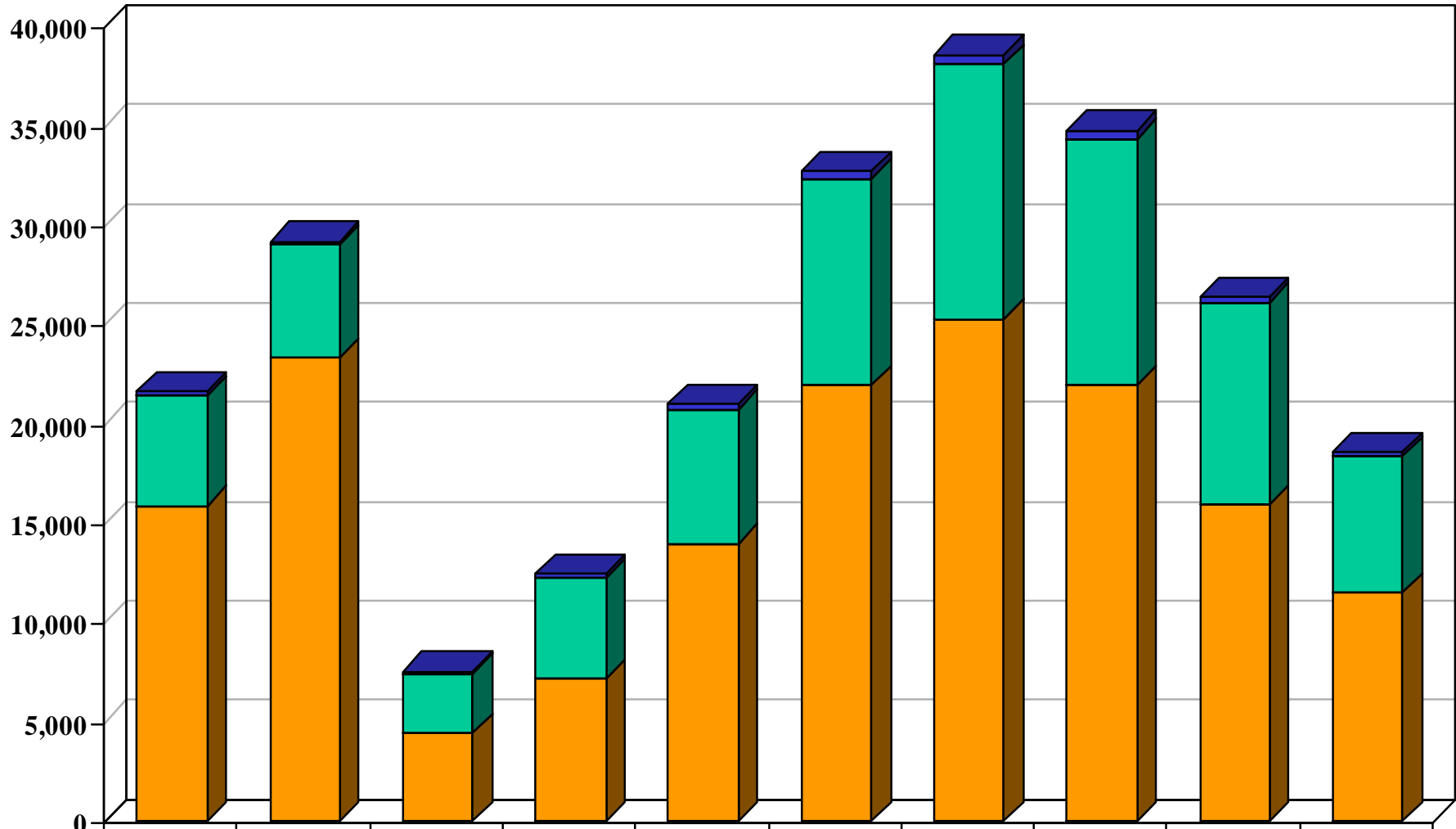


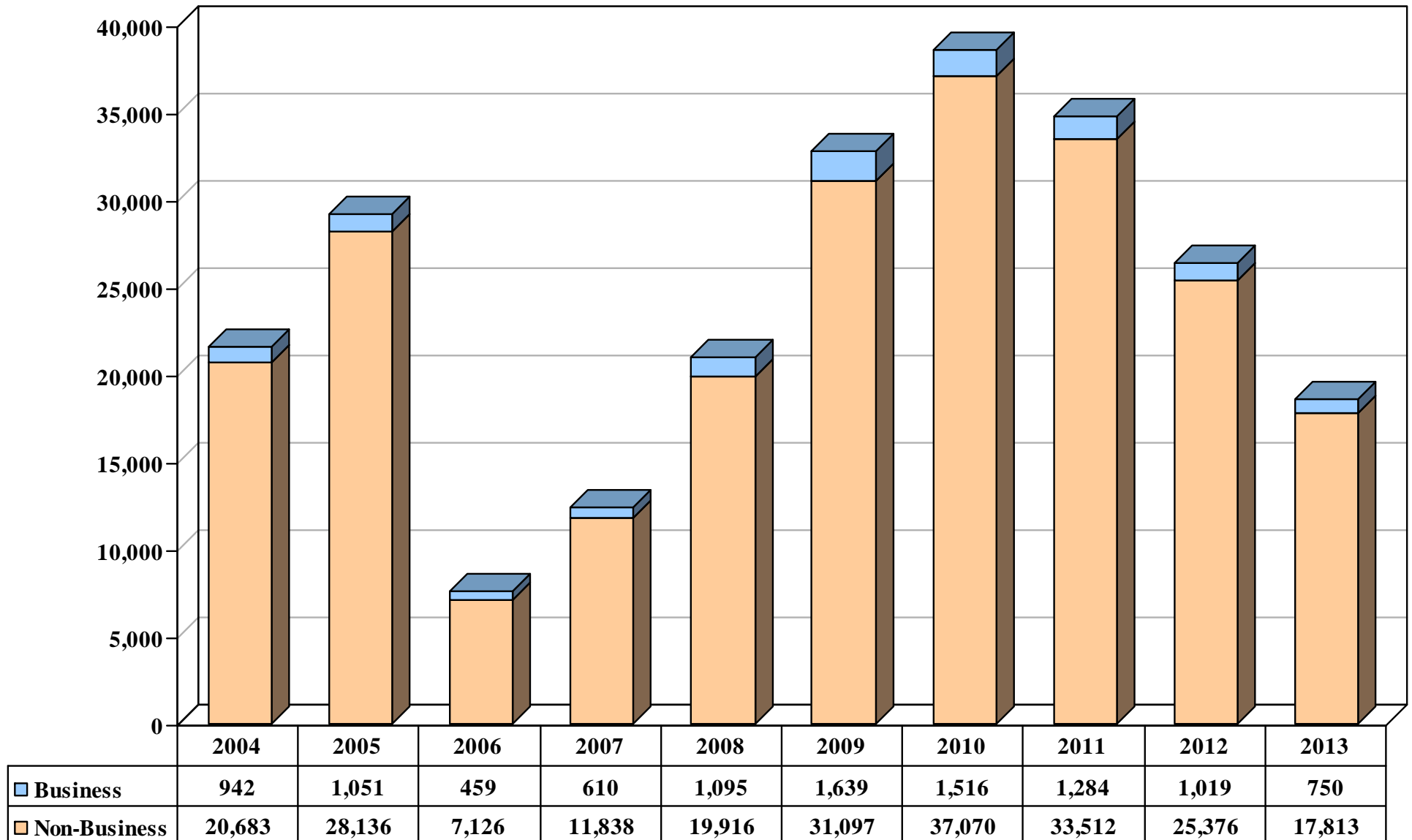
# Northern District of California - Bankruptcy Case Filings by Chapter Ten Year Period 2004 – 2013



	2004	2005	2006	2007	2008	2009	2010	2011	2012	2013
■ Chapter 11	174	129	86	192	249	381	438	396	252	188
■ Chapter 13	5,551	5,709	3,019	5,094	6,770	10,369	12,874	12,437	10,190	6,868
■ Chapter 7	15,900	23,347	4,431	7,159	13,989	21,982	25,263	21,941	15,933	11,494

Filings only excluding reopenings

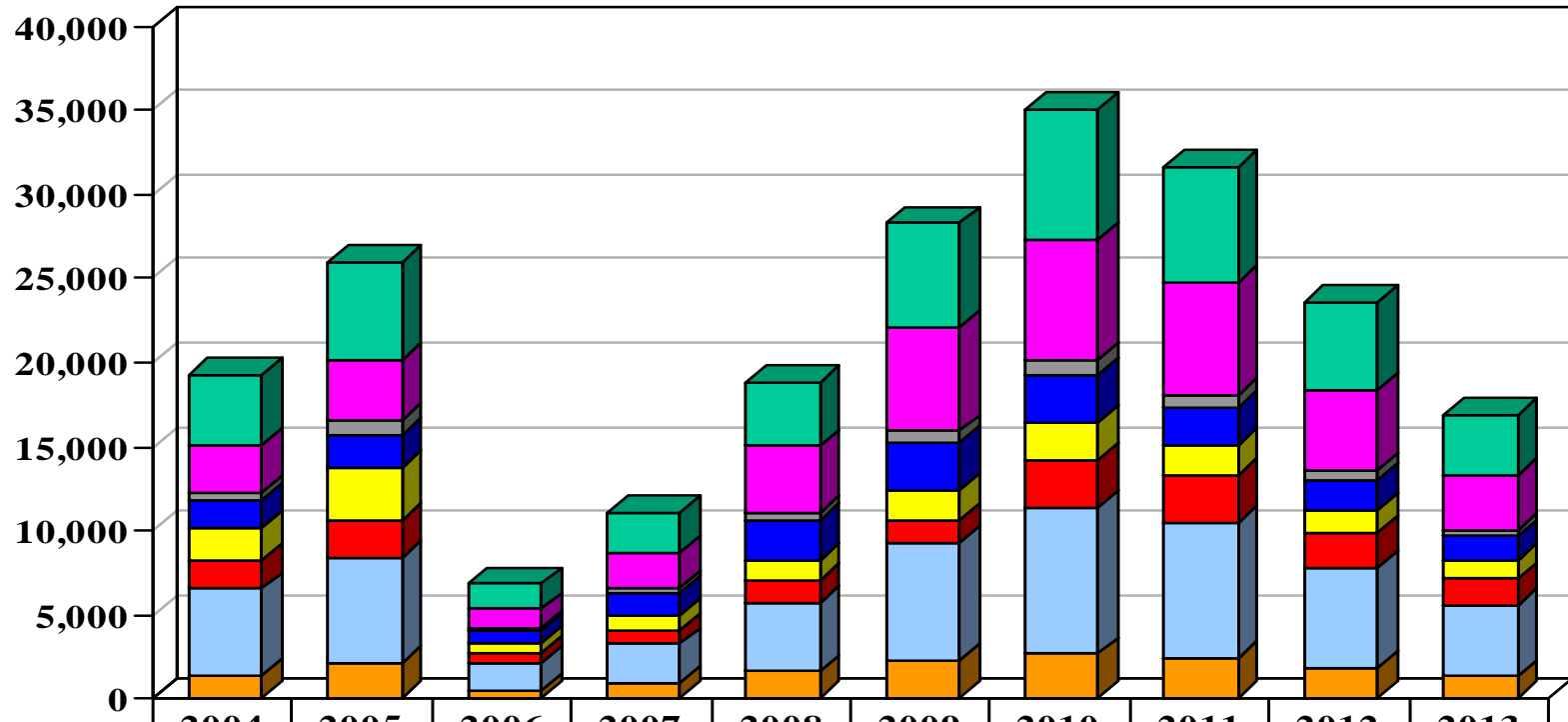
# Northern District of California - Bankruptcy Case Filings by Type Ten Year Period 2004 - 2013



Filings only excluding reopenings and transfers

# Northern District of California - Bankruptcy Case Filings by County\*

## Ten Year Period 2004 - 2013

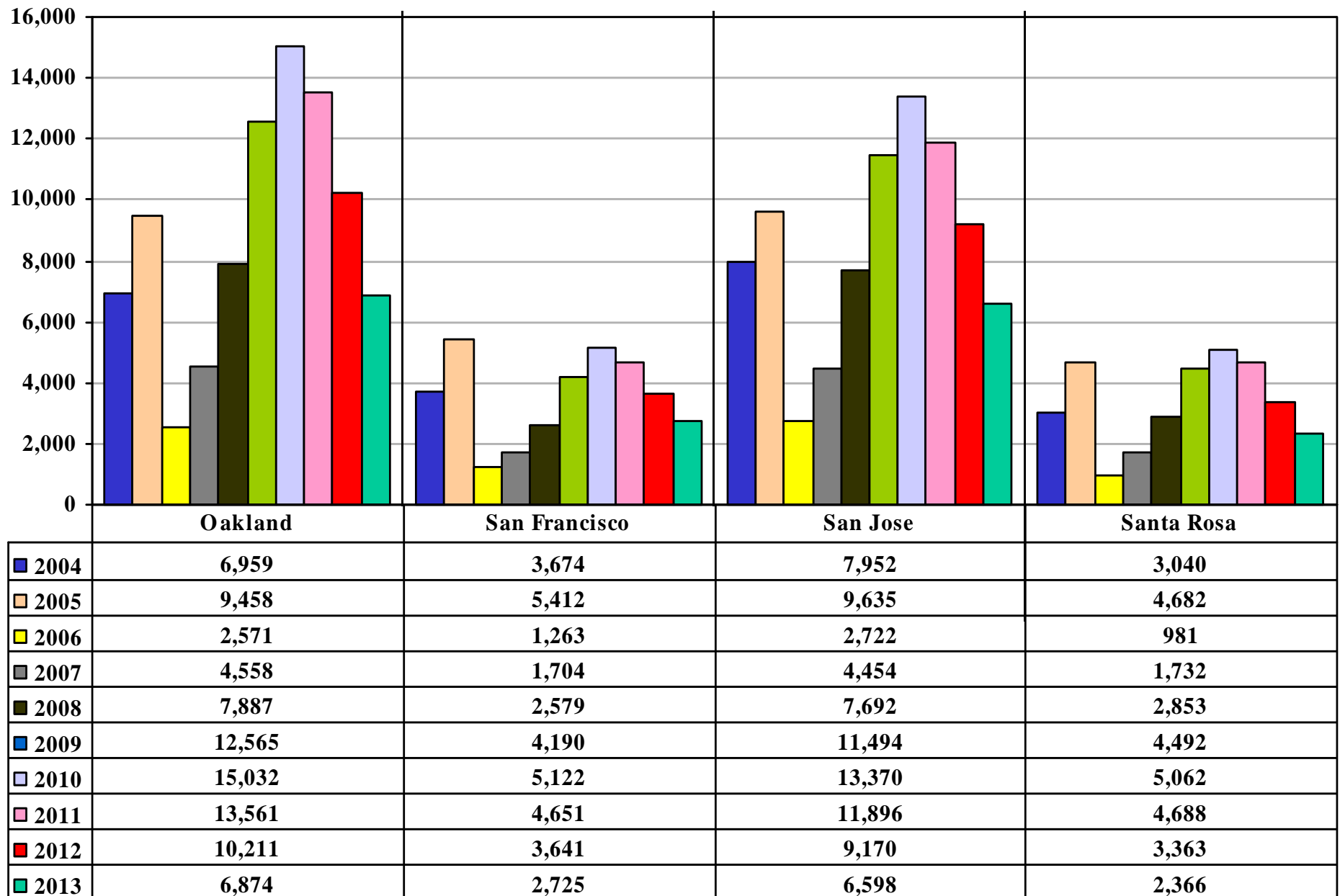


	2004	2005	2006	2007	2008	2009	2010	2011	2012	2013
Alameda	4,163	5,816	1,482	2,374	3,854	6,180	7,747	6,841	5,224	3,613
Contra Costa	2,755	3,564	1,068	2,111	3,968	6,157	7,152	6,646	4,738	3,232
Marin	492	834	179	260	382	702	831	756	585	389
Monterey	1,633	1,942	739	1,381	2,421	2,762	2,829	2,258	1,846	1,457
San Francisco	1,959	3,086	653	885	1,184	1,813	2,191	1,823	1,347	1,067
San Mateo	1,663	2,270	575	808	1,352	1,355	2,919	2,797	2,051	1,519
Santa Clara	5,132	6,255	1,597	2,298	4,064	6,953	8,677	8,012	5,963	4,275
Sonoma	1,333	2,073	468	878	1,554	2,268	2,579	2,388	1,764	1,266

Filings only (excluding reopenings and transfers)

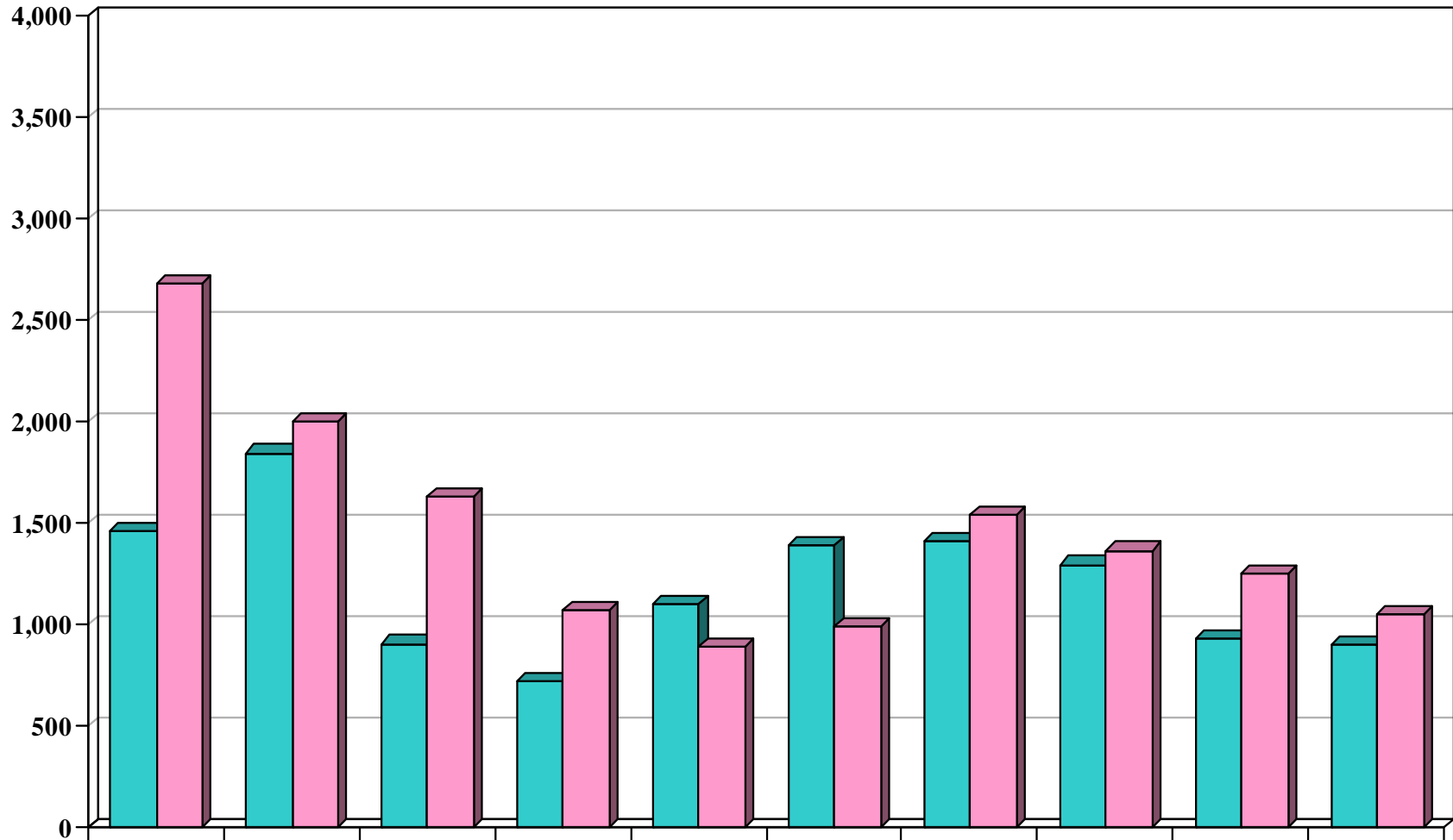
\* Only major Northern California counties are represented in this chart.

# Northern District of California - Bankruptcy Case Filings by Division Ten Year Period 2004 - 2013



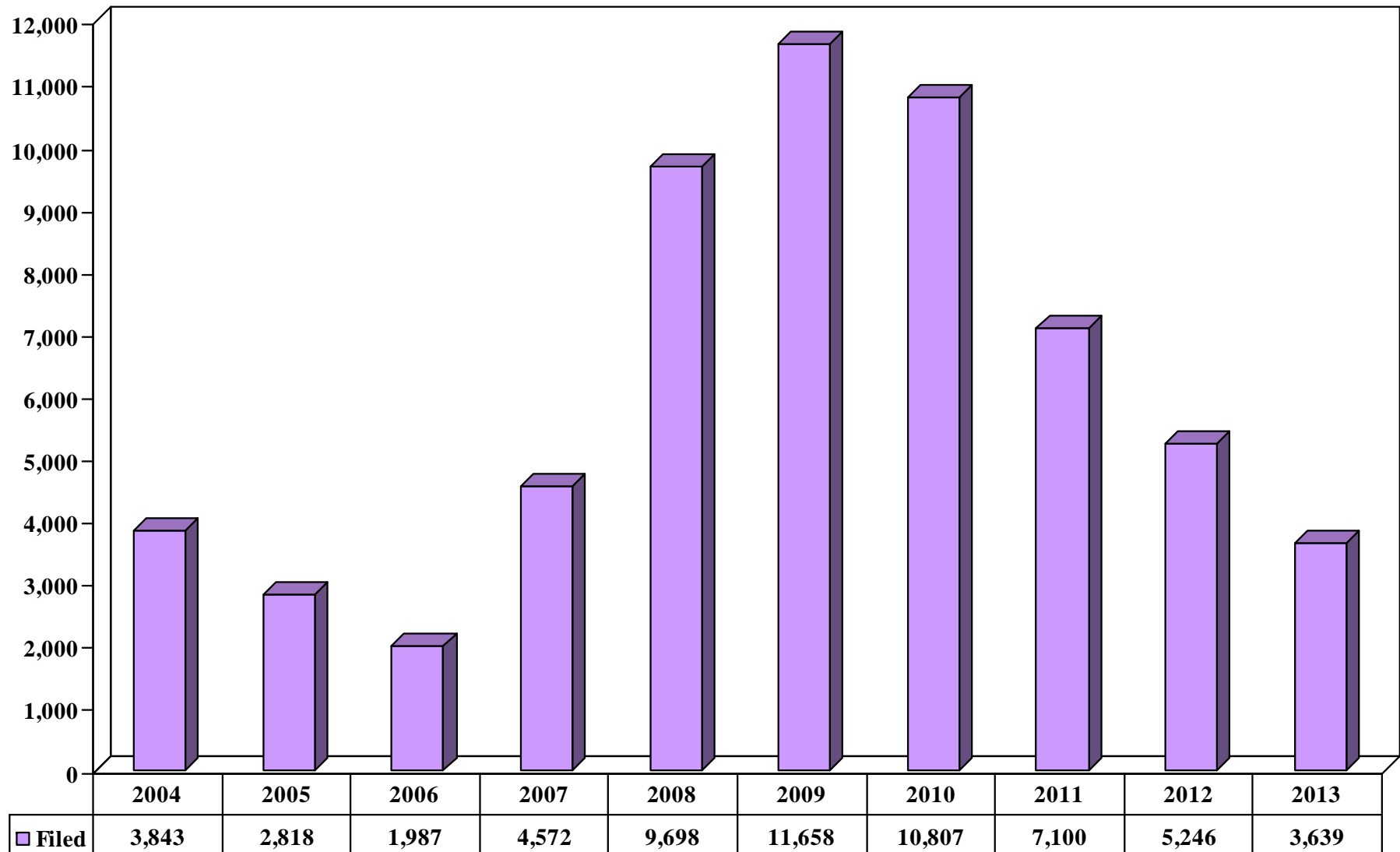
Filings only (excluding reopenings and transfers)

## Northern District of California - Adversary Proceedings Ten Year Period 2004 - 2013

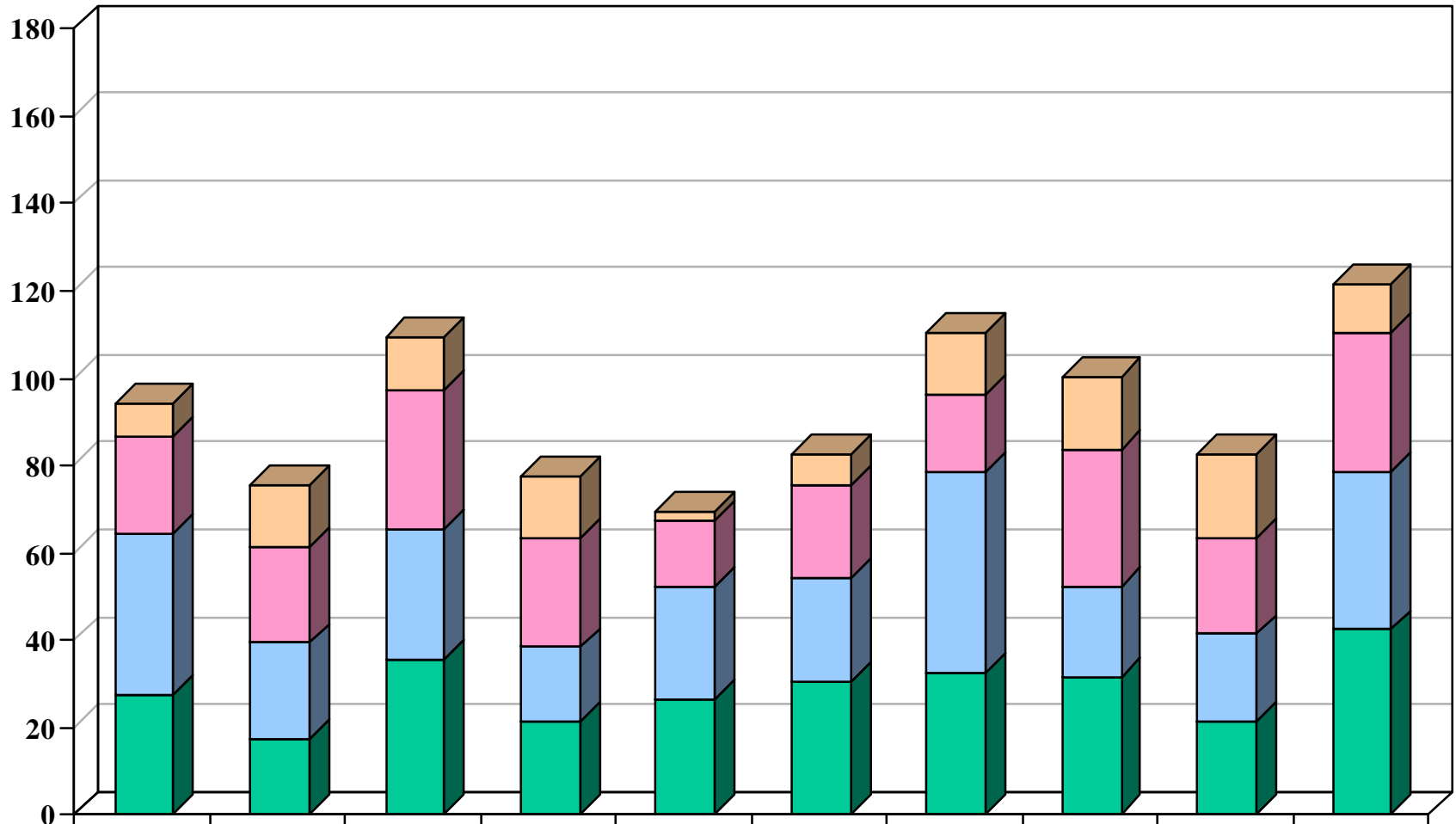


	2004	2005	2006	2007	2008	2009	2010	2011	2012	2013
<span style="color: teal;">■</span> Filed	1,458	1,845	905	721	1,101	1,389	1,407	1,295	932	896
<span style="color: pink;">■</span> Terminated	2,680	1,998	1,628	1,073	887	986	1,542	1,365	1,252	1,047

## Northern District of California - Motion for Relief from Stay Ten Year Period 2004 - 2013



## Northern District of California - Appeals Filed by Division Ten Year Period 2004 - 2013



	2004	2005	2006	2007	2008	2009	2010	2011	2012	2013
■ Santa Rosa	8	14	12	14	2	7	14	17	19	11
■ San Jose	22	22	32	25	15	21	18	31	22	32
■ Oakland	37	22	30	17	26	24	46	21	20	36
■ San Francisco	27	17	35	21	26	30	32	31	21	42